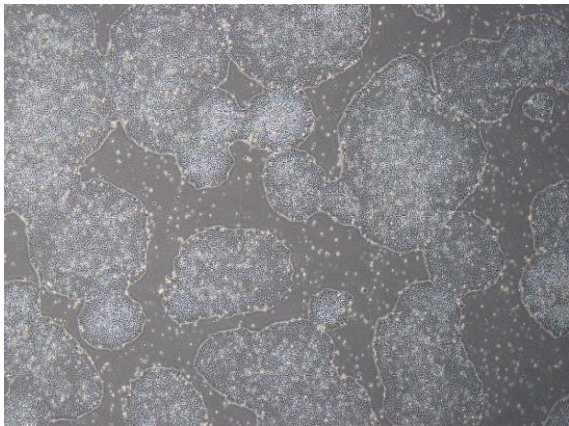
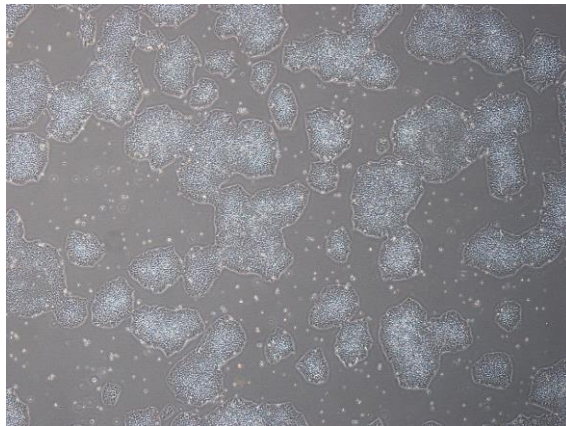


【 CiRA-j-1305 】 Morphology of iPSC colonies

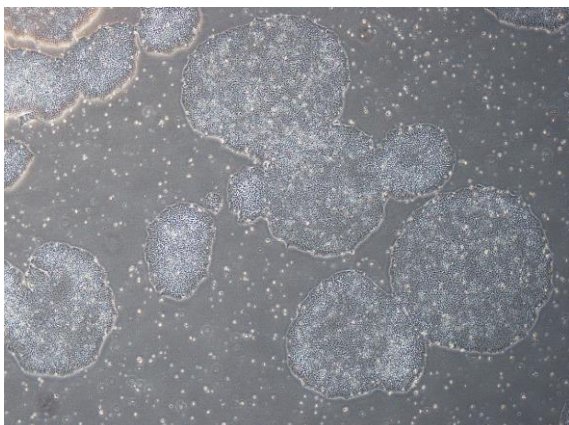
CiRA-j-1305-A: passage-2



CiRA-j-1305-B: passage-3



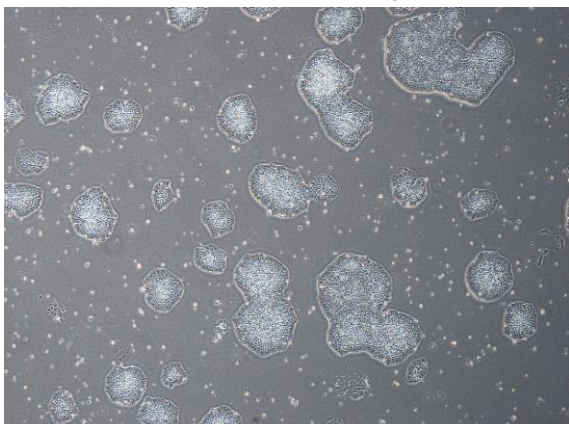
CiRA-j-1305-C: passage-2



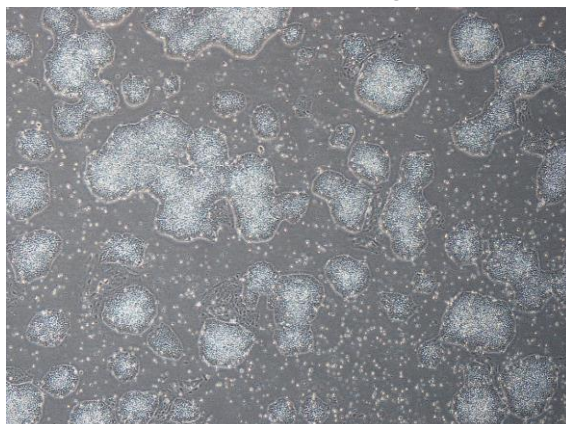
CiRA-j-1305-D: passage-2



CiRA-j-1305-E: passage-2



CiRA-j-1305-F: passage-2



(All images were captured at 4x magnification)